

Rankala
D Mart

Architects
Ethos Architects
Abhijeet Mane - 9923729988
Ajay Kulkarni - 9372721818

Structural Consultants
Mahesh Kumbhojkar - 9822083554

Legal Adviser
Adv. Ranjeet Chendke - 9028095354



Booking Contact
Office : 7249146454
Suresh Bhanushali : 9823075013
Ramchandra Lavhate : 8482832242

Site:
R.S. No. 1148/A, Plot No. C-3 & C-4, A Ward,
Shivshakti Nagar, Phulewadi Ring Road, Kolhapur



Artemide 9765642728

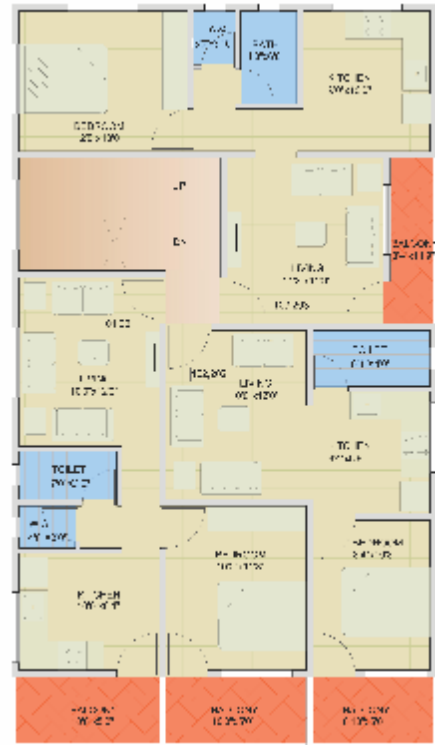
Fulfill your dreams here...



Note: This brochure is merely conceptual and is not legal document, it can not be treated as a part of final purchase agreement. All dimensions are approximate and subject to contraction variances. Interior designing used in the unit plans and images are only for illustrative purpose. Developers reserves the rights to amend architectural specifications during development stages.

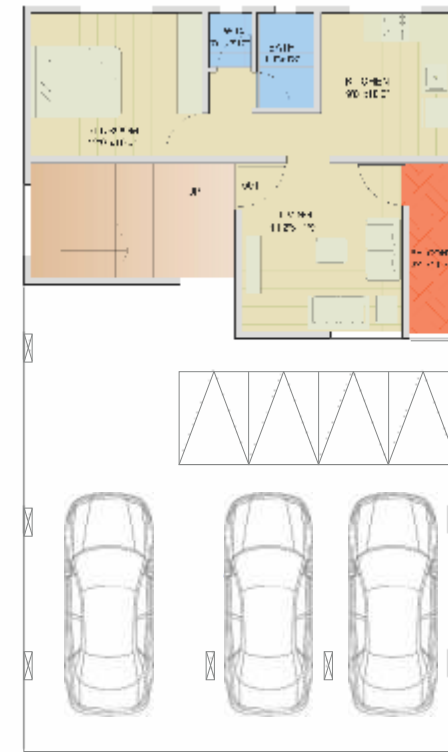
Phase 1

1BHK Typical floor plan



First & Second Floor Plan

FLAT NO.	CARPET AREA	SALABLE AREA
101, 201	487.86 sq. ft.	634.22 sq. ft.
102, 202	363.67 sq. ft.	472.77 sq. ft.
103, 203	454.45 sq. ft.	590.78 sq. ft.



Ground Floor Plan

FLAT NO.	CARPET AREA	SALABLE AREA
001	454.45 sq. ft.	590.78 sq. ft.



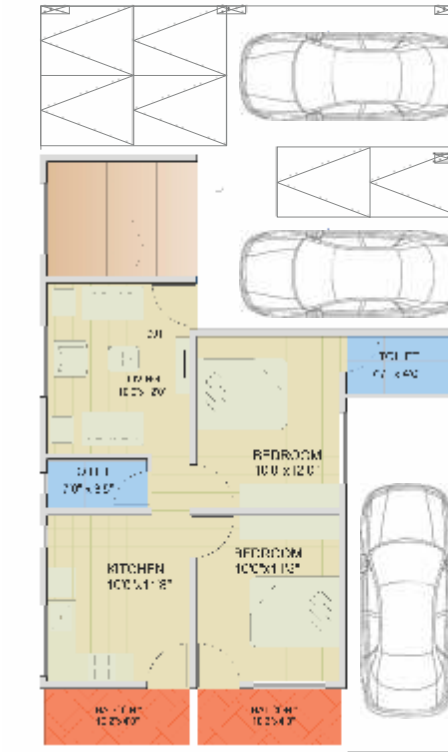
Phase 2

1BHK & 2 BHK Typical floor plan



First & Second Floor Plan

FLAT NO.	CARPET AREA	SALABLE AREA
101, 201	487.86 sq. ft.	634.22 sq. ft.
102, 202	363.67 sq. ft.	472.77 sq. ft.
103, 203	454.45 sq. ft.	590.78 sq. ft.



Ground Floor Plan

FLAT NO.	CARPET AREA	SALABLE AREA
001	630.75 sq. ft.	819.97 sq. ft.



Specifications

STRUCTURE

- Earthquake Resistant Structure

Masonry

- External 6" & Internal 4" Masonry Walls
- All Internal Wall With Smooth Gypsum Finish Plaster And Sand Faced Plaster On External Face Of The Building

PAINT

- External Paint : Texture
- Internal Paint : Tractor Emulsion

WINDOW & DOORS

- Powder Coated Aluminum Window Along With The Safety M. S. Grills.
- Main Door Frame Wooden & Premium Quality Flush Doors.

ELECTRICAL

- Concealed Copper Wiring
- Premium Quality Electrical Switches.
- Miniature Circuit Breakers
- Battery Backup Provision

FLOORING

- 24"x24" Vitrified Flooring In All Rooms
- Anti-skid Flooring Tiles In Bathroom

KITCHEN

- Granite Premium Modular Kitchen Platform With S.S. Sink.
- Premium Quality Sink Cocks.
- Glazed Tile Dado Up To Lintel Level

TOILETS

- C.P. Fittings
- Premium Bath Fittings
- Granite Door Frames
- Wall Tiles Up To Lintel Level

OTHER

- Decorative Compound Wall
- Parking Space
- Rain Water Harvesting
- KMC Water Connection
- Bore Water Connection

AMENITIES

- Solar Water System
- CCTV Camera For Common Area
- Water Purifier Per Flat